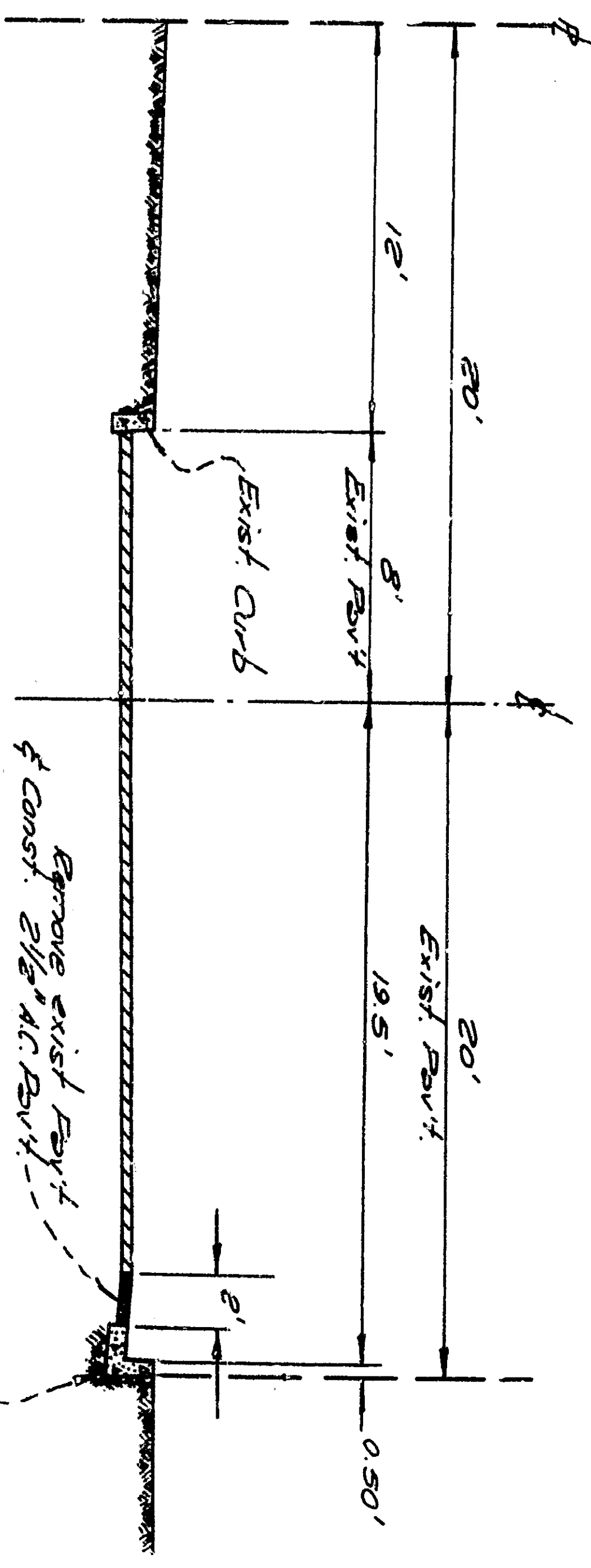
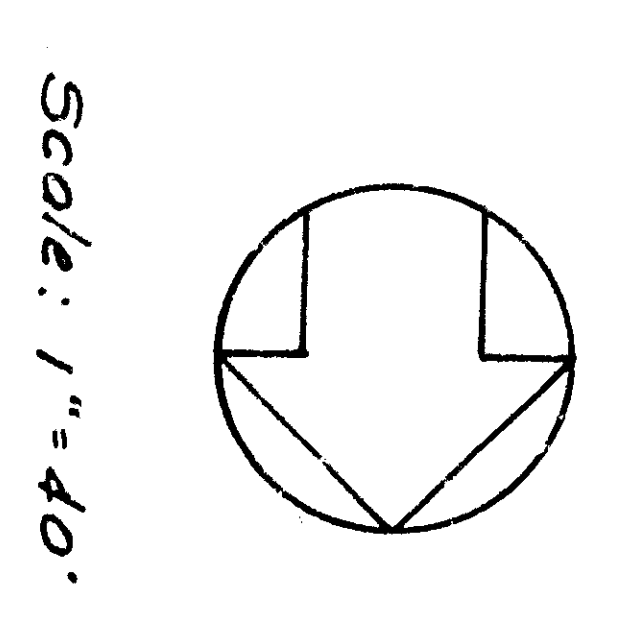


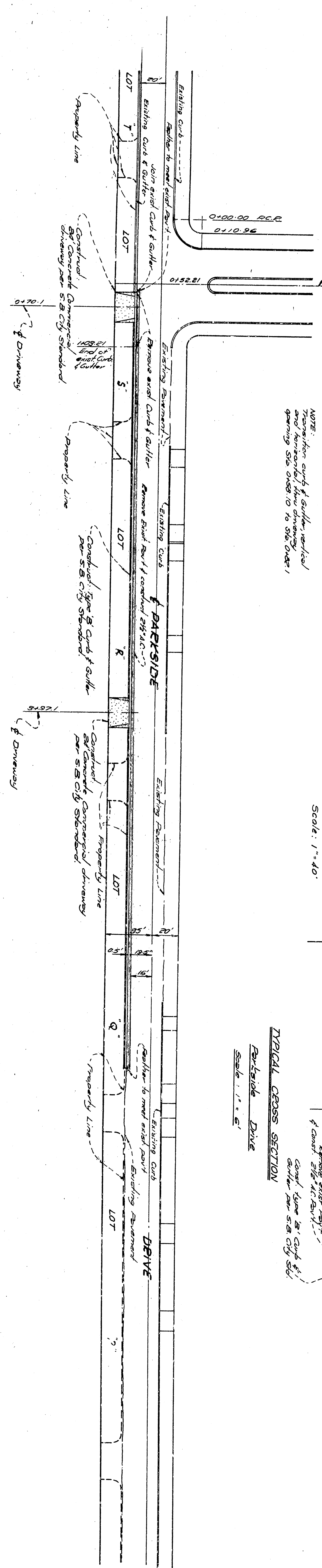
PROFILE SCALE
 1" = 10'
 1/2" = 5'

NOTE:
 Transition curb & gutter, vertical
 transition curb & gutter
 opening 50' ahead to 10' S&C standard.



TYPICAL CROSS SECTION
 Parkside Drive
 Scale: 1" = 4'

- GENERAL NOTES
1. All work embodied on this plan shall be done in accordance with the specifications of Standard Specifications for Highway Construction, 1987 Edition, published by the Department of Transportation, State of California.
 2. All structural work shall be done in accordance with the Department of Engineering, State of California, Division of Engineering, State of California, Section 170000, Standard Specifications for Highway Construction, 1987 Edition, published by the Department of Transportation, State of California.



SUBMITTED BY:		APPROVED:		DATE:	
CAMPBELL MILLER & ASSOCIATES CIVIL ENGINEERING FIRM		[Signature]		12/21/83	
CITY ENGINEER:		REGISTERED CIVIL ENGINEER NO. 12,543		1983	
SHEET 1 OF 1		NO. 3272		CITY OF SAN BERNARDINO	
DRAWN BY: [Signature]		CHECKED BY: [Signature]		RECOMMENDED BY: [Signature]	
Don B. Miller R.C.E. No. 8720		[Signature]		[Signature]	
DEPARTMENT OF ENGINEERING CITY OF SAN BERNARDINO IMPROVEMENT PLANS PARKSIDE DRIVE 34th Street to 2nd Street, S&C 17-10-1					

